



ELIZABETH F. CORRELL TEEN CENTER



ARE YOU READY?

For the Best Summer Ever!

Join your friends at the **Elizabeth F. Correll Teen Center** this summer for the Best Summer Ever! We have fantastic field trips scheduled and unique fun events going on at the center all summer long.

FIELD TRIPS

- * Jacksonville Sharks Arena Football Game
- * Jacksonville Suns Baseball Game
- * Wild Adventures
- * St. John's Town Center
- * Bowling,
- * Swimming and More

~ Must be a member, signed up and paid in advance to attend field trips.

~ Must have at least 12 members signed up for field trip.

~ Field Trip sign ups will be available starting May 23rd.

~ We ask that you are signed up for field trips the week before so sufficient transportation and staff can be accommodated.

LOCATION

Elizabeth F. Correll Teen Center
4226 Coral Park Drive,
Brunswick, GA 31520

Phone: 912-466-9905

HOURS OF OPERATION (SUMMER)

Mon. - Thu.: 8:00am - 6:00pm
 Fri.: 5:00 - 11:00pm
 Sat. & Sun.: CLOSED

MEMBERSHIPS

- * Monthly memberships are \$25.00 and due at the beginning of each month.
- * Members can sign up anytime during the month for a membership.
- * Quarterly memberships are \$50.00 and due on at the beginning of each quarter.
- * Our next quarter starts on July 1st and goes until September 30th.
- * Members can sign up anytime during the quarter for a membership.

What are
you waiting
for?





ELIZABETH F. CORRELL TEEN CENTER



TRANSPORTATION

We will be providing transportation for our members throughout the summer:

Harris Teeter on St. Simons Island

Pick up at: 8:30am on Mon.-Thu.
6:00pm on Fri.

Drop off at: 5:30pm on Mon.-Thu.
10:30pm on Fri

Lanier Plaza parking lot on Hwy 17

Pick up at: 9:00am on Mon.-Thu.
5:15pm on Fri.

Drop off at: 5:00pm on Mon.-Thu.
10:00pm on Fri. *"Bring in style"*



MEALS

We are providing free breakfast and lunch every day.

The U.S. Department of Agriculture (USDA) prohibits discrimination in all its programs and activities on the basis of race, color, national origin, age, disability, and where applicable, sex, marital status, familial status, parental status, religion, sexual orientation, genetic information, political beliefs, reprisal, or because all or part of an individual's income is derived from any public assistance program. (Not all prohibited bases apply to all programs.) Persons with disabilities who require alternative means for communication of program information (Braille, large print, audio-tape, etc.) should contact USDA's TARGET Center at (202) 720-2600 (voice and TDD).

To file a complaint of discrimination, write USDA, Director, Office of Civil Rights, 1400 Independence Avenue, SW, Washington, DC 20250-9410 or call (800) 795-3272 or (202) 720-6382 (TDD).

REFUEL

The Elizabeth F. Correll Teen Center also features their own snack bar! With everything from burgers, sodas to sweets.





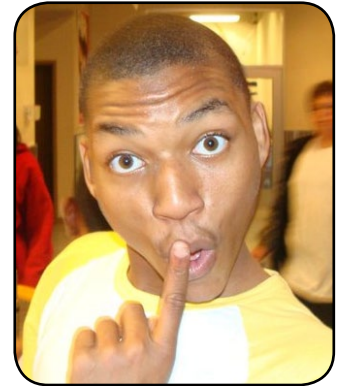
ELIZABETH F. CORRELL
TEEN CENTER



STILL WANTING MORE?

FRIDAY NIGHT LIVE

Virtually every Friday night we have special events going on at the Teen Center. From Live Concerts, Dances, paint ball, sporting tournaments, video competitions, karaoke nights, and much more. Don't miss our FRIDAY NIGHT LIVE Events at ECTC!



FILM/VIDEO PRODUCTION:

Learn how to create music videos, documentaries and films. It will be an 8 week program. Come sign up today or for more information contact Emma at ectcspecialevents@gmail.com.

GIRLS ROOM:

We have a room just for the females at the Teen Center. Equipped with a couch, magazines and everything you need for some quality girl time.



NEW SPORTS EQUIPMENT

The Teen Center has recently added Disc Golf and Tennis equipment to its list of sports available at the Teen Center. Come on out and give them a try! Don't forget we also have Soccer, Volleyball, Football, Fishing and Basketball equipment available for use.

The TAG mission is to represent and support the diverse voices of the Glynn County community. The TAG group focus on further enhancing the community by serving as links between Teens and all others, and by developing ideas, implementing Teen programs and encouraging Teen involvement. This is perfect for someone who is incredibly social.

JOIN US AT TAG

The Teen Advisory Group (TAG) is made up of 12-15 Glynn County school students who want to plan and lead events for students at the Teen Center.

There are some great benefits to being in this group including discounted membership and free admission to all special events.





ELIZABETH F. CORRELL TEEN CENTER



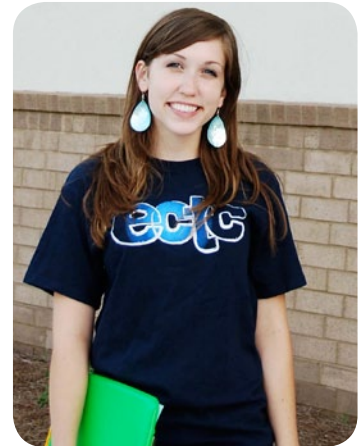
GENERAL EXPECTATIONS Of Teen Council Members

- * Teen Council members must attend the club for a minimum of five (5) hours per week Monday through Thursday.
- * Teen Council members cannot miss more than one (1) Teen Council meeting per quarter.
- * Teen Council members must, at all times, uphold the guidelines set forth by the Elizabeth F. Correll Teen Center Behavior Code.
- * Teen Council members must, at all times, uphold the Teen Council Pledge.



TAG group currently meets once a week to discuss and plan upcoming events.

If you have any other questions or are interested in being part of this VIP group please contact Emma at 912-399-8077 or at ectcspecialevents@gmail.com.



CHARACTER AND LEADERSHIP TRAITS Expected Of Teen Council Members

- * Below is a list of traits that all Teen Council members are expected to exhibit. Possession of these traits helps determine potential council members.
- * Honest
- * Responsible
- * Dependable
- * Resists social pressures
- * Fair
- * Self-motivated
- * Respectful
- * Kind
- * Enthusiastic



GET CONNECTED

Website: www.theectc.com
 Facebook: www.facebook.com/ectc1
 Twitter: @ECTeenCenter
 MySpace: www.myspace.com/ECTeenCenter

ELIZABETH F. CORRELL
TEEN CENTER is a unit of



BOYS & GIRLS CLUBS
OF SOUTHEAST GEORGIA

